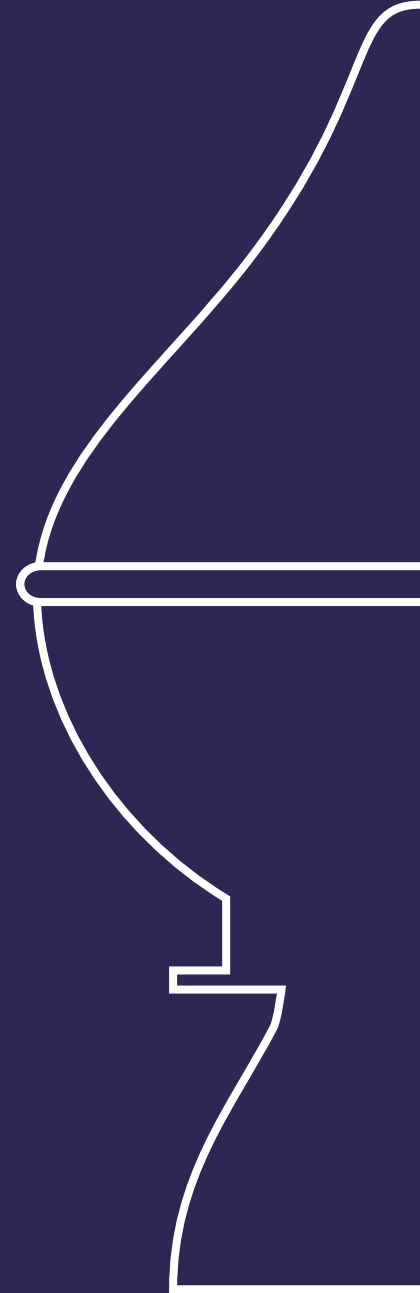


**HARRISON
FLAGPOLES**

—

**GARDEN
FLAGPOLE
BUYING GUIDE**



INTRODUCTION

Buying a flagpole for your home can seem like a daunting task - but don't worry.

If you don't know your halyard from your finial, this guide will take you through your options to help you choose the right flagpole for you.

Simply answer the seven easy questions then follow the handy flowchart at the back of this guide.

If you are still unsure, then our team of flagpole experts are always happy to help on **01325 355433**.



**My guide will help you select your
perfect Garden Flagpole.**

Before you begin, it's worth noting a few points listed below:

- Our 6 metre garden flagpoles are designed to fly a 1.83m x 0.91m landscape flag finished with a rope and toggle. This is often referred to as a 2 yard flag.
- Our glassfibre and aluminium poles are both white in colour. Our aluminium poles are powder coated white and our glassfibre poles are manufactured in matt white, with the executive range having a white gel coat giving them a shiny appearance.
- All of our garden flagpoles are installed using a ground sleeve, this means you will need to dig a hole in your garden and concrete in a metal tube supplied with the pole. When the concrete has set (after approximately seven days), your flagpole will then slot into the tube. This will mean that you will lose approximately 10% of the pole length into the ground. Our deluxe range takes this into consideration, with a longer pole. Therefore 6m or 8m of pole is always visible above ground. 6m poles from the classic and executive ranges will have approximately 5.4m of pole visible above ground.

We have a guide and a video to talk you through installation but if you would rather not tackle the job yourself our installation team can take the hassle away. Please get in touch with us for a quote.



External Halyard



Internal Halyard

How tall do you want your flagpole to be?

Our most popular size of garden flagpole is the 6 metre. It's perfect for your modest family home and is just taller than the gutter on a two storey house. If, however you are looking for a flagpole to complement your stately or three storey home then you might prefer an 8 metre pole.



What shape do you prefer?



This is all about personal preference on how you'd like your flagpole to look, but you should be mindful of where you live, as each style has a different maximum wind speed tolerance before it should be taken down. We recommend the tapered pole for coastal areas where it tends to be windier.

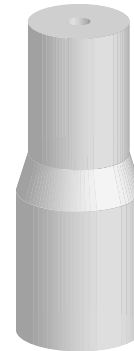
Straight (Classic Range) - This 60mm in diameter straight pole can withstand wind speeds of up to 75mph when unflagged. It's available in one or two pieces. (The aluminium version is available in two pieces only, but more on that later).

Step-Tapered (Deluxe Range) - The two sections of pole are joined with a step-tapered pole joint. The bottom section is 76mm in diameter and the top section is 60mm in diameter. This pole also has a max wind speed of 75mph unflagged.

Tapered (Executive Range) - This pole tapers from 100mm in diameter at its base to 65mm in diameter at the top. It's shiny white appearance gives any home that extra touch of elegance. It can withstand wind speeds of up to 85mph unflagged. It is only available in 1 piece.



Straight



Step Tapered



Tapered

What do you want your flagpole to be made from?



Our Garden Flagpoles are made from glassfibre or aluminium.

Glassfibre - A reinforced plastic material which is composed of a woven material that's embedded with glassfibres. Poles are manufactured in our UK factory. These poles are resistant to moisture, humidity, salt and pollutants and can be washed down with mild detergent to maintain its appearance.

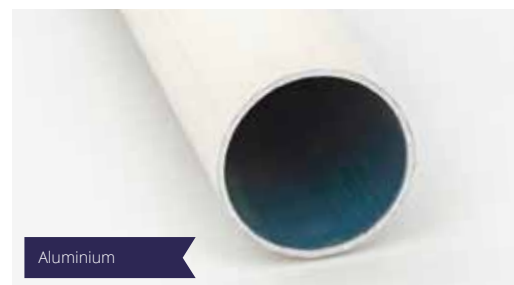
Aluminium - At 60mm in diameter and with a 2.5mm wall thickness, our aluminium poles are thicker and stronger than the industry standard. Staining will occur over time due to weather exposure. Poles can be recycled at the end of their life.

How many pieces do you want your pole to come in?



Where applicable you can choose how many pieces you want your pole to come in. A two piece pole can be easier to handle if you ever want to store or transport it but will have a visible joint.

Our classic range of straight poles are available in one or two pieces. Due to their design, the deluxe step tapered poles are two piece only and the executive tapered poles are one piece only.



How do you want to fly your flag?

Q5

If you have chosen our classic aluminium pole, you now need to choose which roping system you would like to fly your flag: internal or external.

All of our other pole ranges have an external roping system as standard.

External Halyard - Places the halyard (rope) on the outside of the flagpole, meaning it is exposed to the elements but makes raising and lowering the flag quicker. The halyard is tied off using a cleat.

Internal Halyard - Conceals the halyard (rope) inside the flagpole itself behind a small lockable door. It gives a more streamlined appearance and also increases the security of your flag.



What finishing touches do you want to add?

Q6

Flagpoles are finished with a finial on the top. You can choose between a white mushroom or a gold onion.

Both finials are made from strong plastics to reduce maintenance.



You now have all the information you need to select your pole but don't forget that last vital step:

What flag would you like to fly?



We can supply a flag to fly with pride on your new flagpole. Our wide range includes home nations, world and county flags or why not design your own with our custom design service?



Home Nation Flags



Bespoke Flags



World Flags



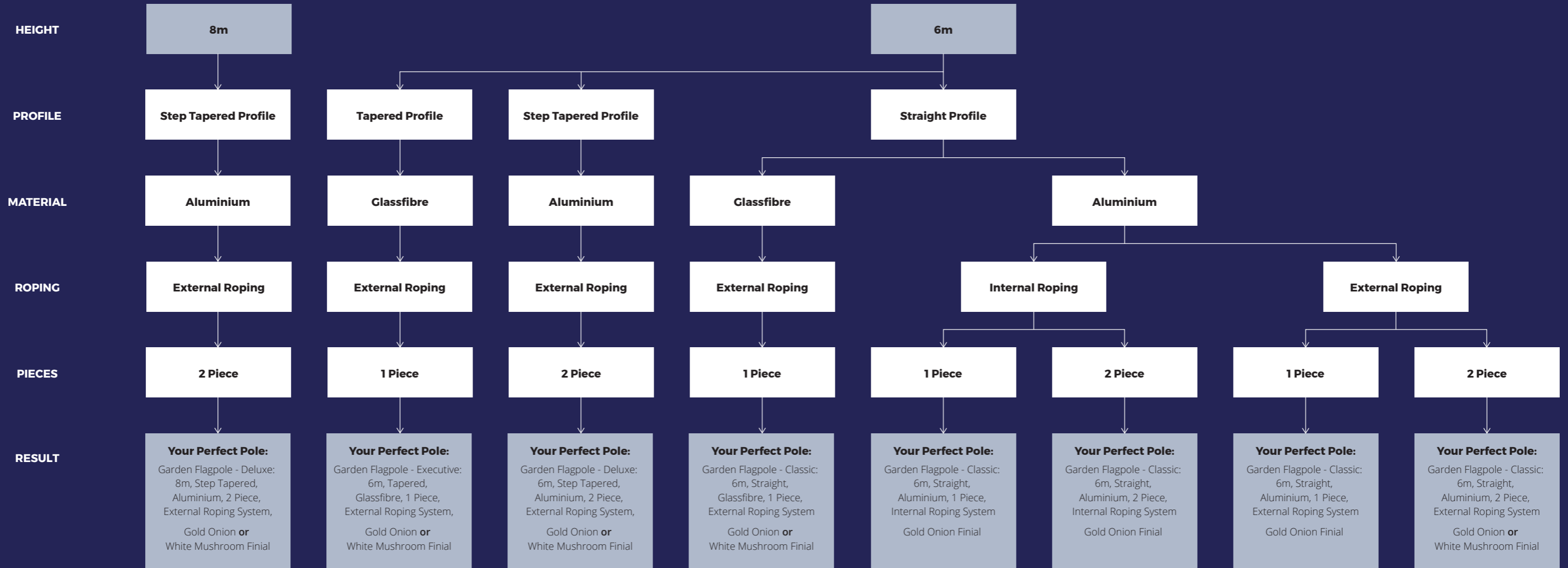
Naval Flags

Now you understand your options, the flow chart on the following page will lead you to your perfect pole.

Once you've selected your flagpole, all you need to do is place your order online at **www.flagpoles.co.uk** or over the phone on **01325 355433**.

Before you know it your flagpole will be pride of place in your garden.

CHOOSE YOUR PERFECT FLAGPOLE



HARRISON
FLAGPOLES

phone:

01325 355 433

email:

sales@weareharrisons.com

web:

www.flagpoles.co.uk

address:

Grindon Way,
Newton Aycliffe,
County Durham, DL5 6DQ
United Kingdom

get social:



part of:

