



COMMERCIAL FLAGPOLE SWIVEL ARM

PRODUCT OVERVIEW

UK manufactured, and the strongest in the industry.

Our flagpoles are regarded by architects and engineers as the very best in the UK.

Available in lengths from 6 to 12 metres and heavy duty as standard, with extra heavy duty and ultra heavy duty options available. All flagpoles are manufactured in our UK facilities and are able to withstand winds of up to 100mph unflagged.

Extra heavy duty poles are advised for windy locations whereas ultra heavy duty poles are advised for coastal towns. The windier the location, the thicker the pole needs to be.

The arm, which comes complete with a gold onion finial and swivels on the flagpole ensures the flag always follows the wind so your message will always be seen. With a 10 year guarantee on the flagpole, you will have peace of mind.

PRODUCT SPECIFICATIONS

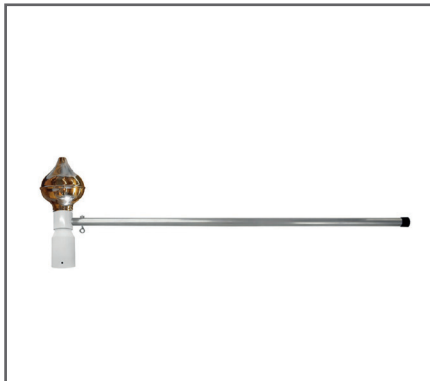
Flagpole Dimensions																					
Flagpole Length (m)	6			7			8			9			10			11			12		
Butt Diameter Ø (mm)	120			120			120			140			140			140			140		
Top Diameter Ø (mm)	65			65			65			65			65			65			65		
Colour	Gel Coat White			Gel Coat White			Gel Coat White			Gel Coat White			Gel Coat White			Gel Coat White			Gel Coat White		
Strength	HD	EHD	UHD	HD	EHD	UHD	HD	EHD	UHD	HD	EHD	UHD	HD	EHD	UHD	HD	EHD	UHD	HD	EHD	UHD
Wall Thickness (mm)	3	4	5	3	4	5	3	4	5	4	5	6	4	5	6	5	6	7	5	6	7
Base Fixing	HBP / GS			HBP			HBP			HBP			HBP			HBP			HBP		
Foundations Required (w² x d) (mm)	500 x 1000			500 x 1000			500 x 1000			650 x 1250			650 x 1250			650 x 1250			650 x 1250		
Recommended Flag Size (mm)	1000 x 2000			1000 x 2500			1000 x 3000			1500 x 4000			1500 x 5000			1500 x 5000			1500 x 6000		

HD - Heavy Duty • EHD - Extra Heavy Duty • UHD - Ultra Heavy Duty • HBP - Hinge Base Plate • GS - Ground Sleeve

PRODUCT FEATURES

Available in 6 to 12 metres in Height
 Designed to Fly Portrait Flags
 Made from Glassfibre
 Available in 1 Piece
 Tapered in Appearance
 Bespoke Colours Available
 Heavy Duty, Extra HD and Ultra HD Options are Available

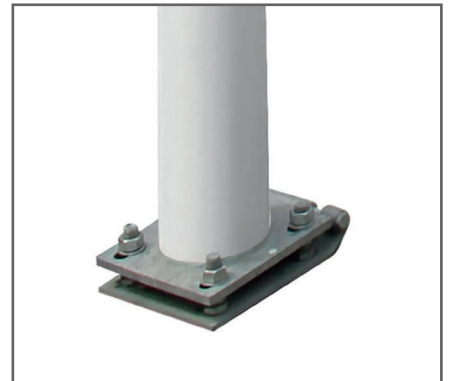
ACCESSORIES



GOLD ONION FINIAL ARM



LOOPED WEIGHT (1.4KG)



HINGE BASE PLATE

Harrison Group

38 Borough Road | Darlington | DL1 1SW | United Kingdom
 phone: 01325 355 433 | web: www.weareharrisons.co.uk | email: sales@weareharrisons.com